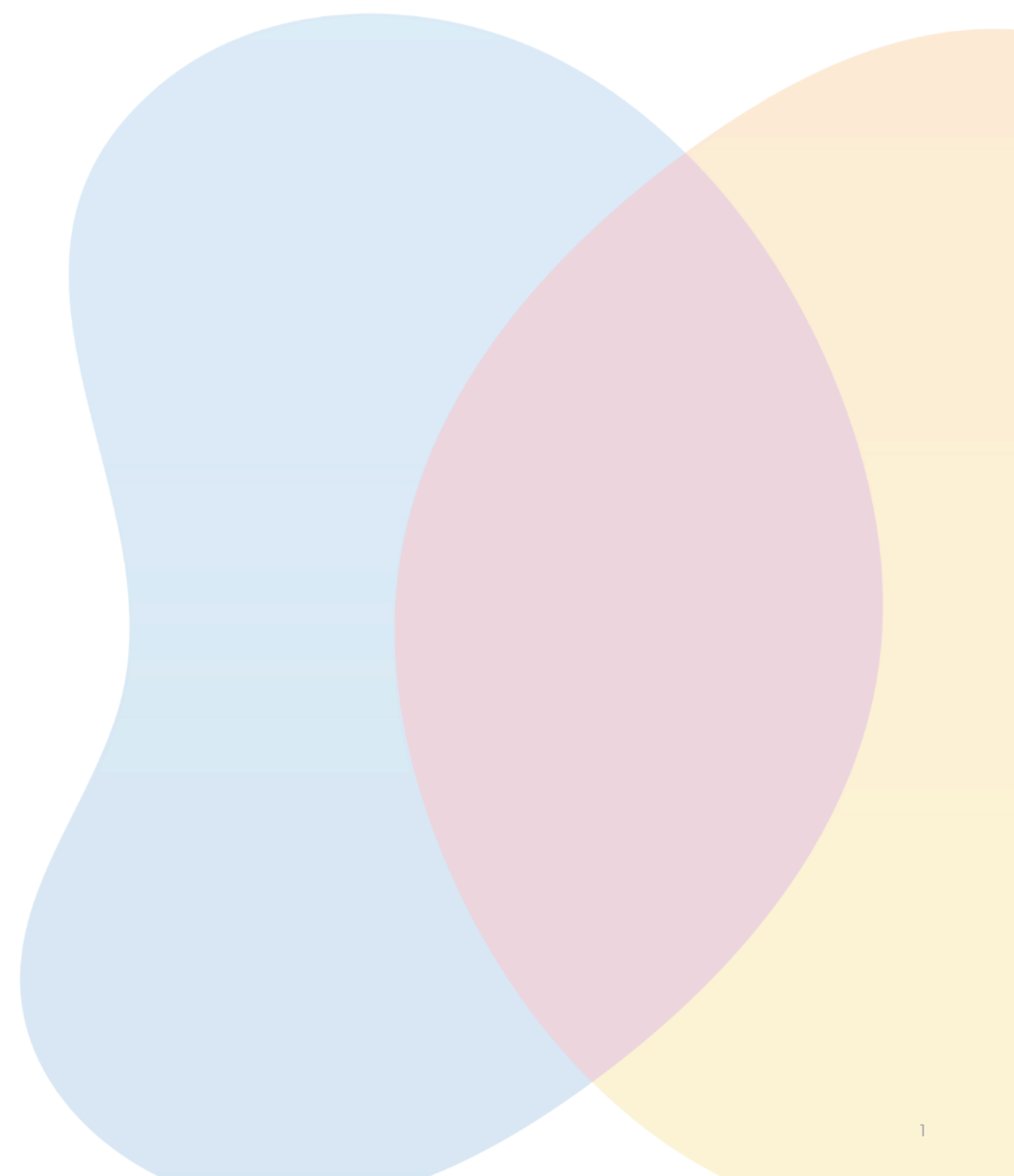
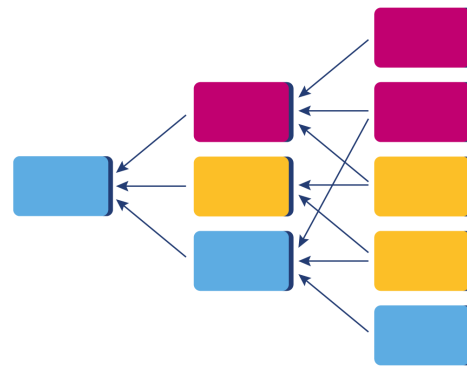


Driver Diagram

Leeanne Lockley



Aims and objectives



The aim of this workshop is to provide you with an understanding of creating driver diagrams, and when to use them.

By the end of this workshop, you will have an understanding of:

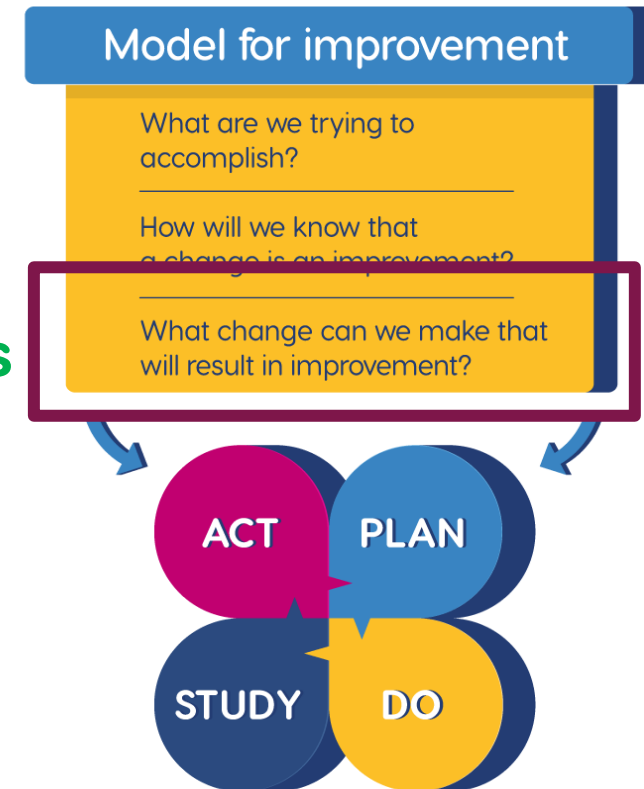
- When to make a driver diagram
- The different components of the driver diagram
- How to use your driver diagram to drive your project



Delivering 10 steps in QI

KQUIP Methodology

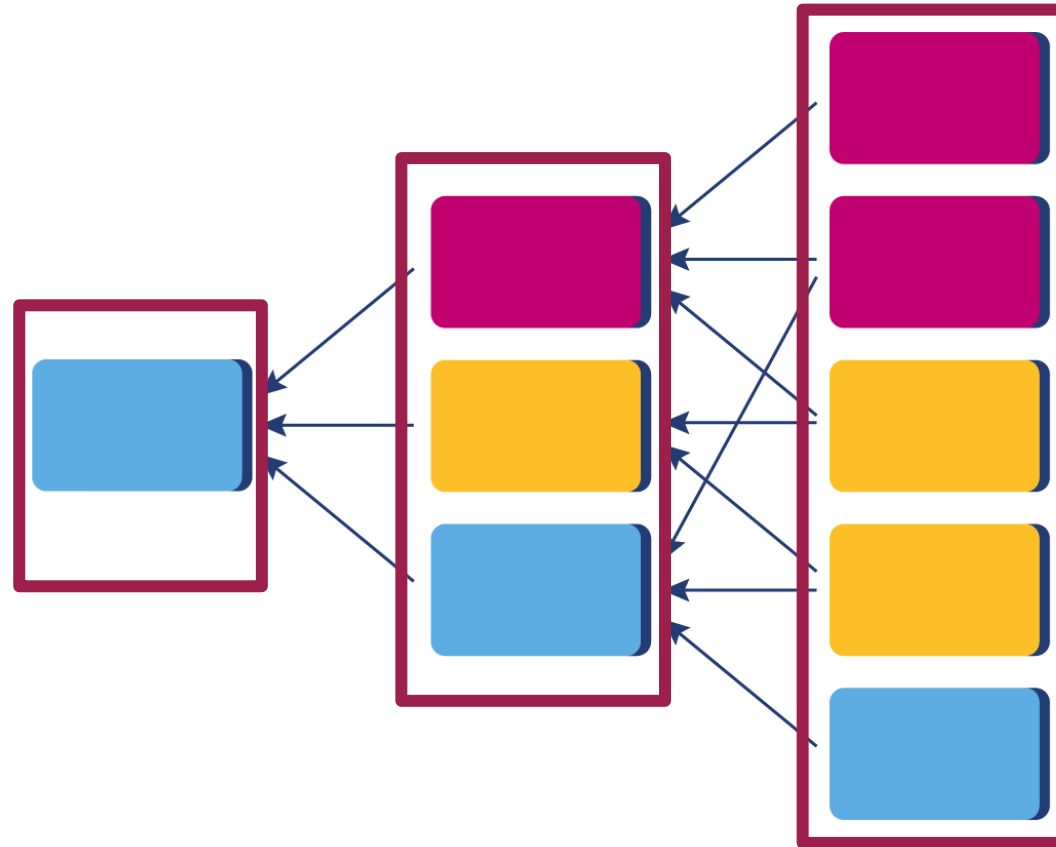
1. Agree an area for improvement
2. Involve and assemble your team
3. Understand your problem/ system
4. Define project aim and scope
5. Choose 'just enough' project measures
6. Develop change ideas
7. Test change ideas (PDSA)
8. Measure impact of changes
9. Do further PDSA cycles
10. Implement successful changes



IHI Model for Improvement

Share your progress

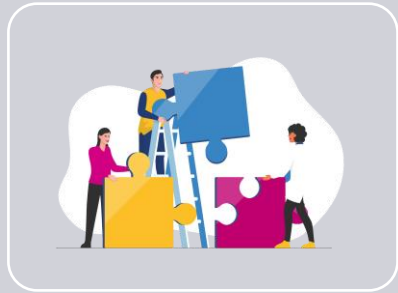
Driver diagram



Why Driver Diagrams



More than one way to achieve your project aim



Gives focus



Don't eat the elephant

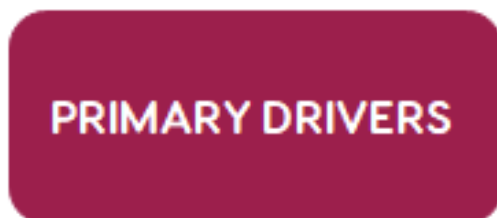


Relationship between drivers, measurement and changes



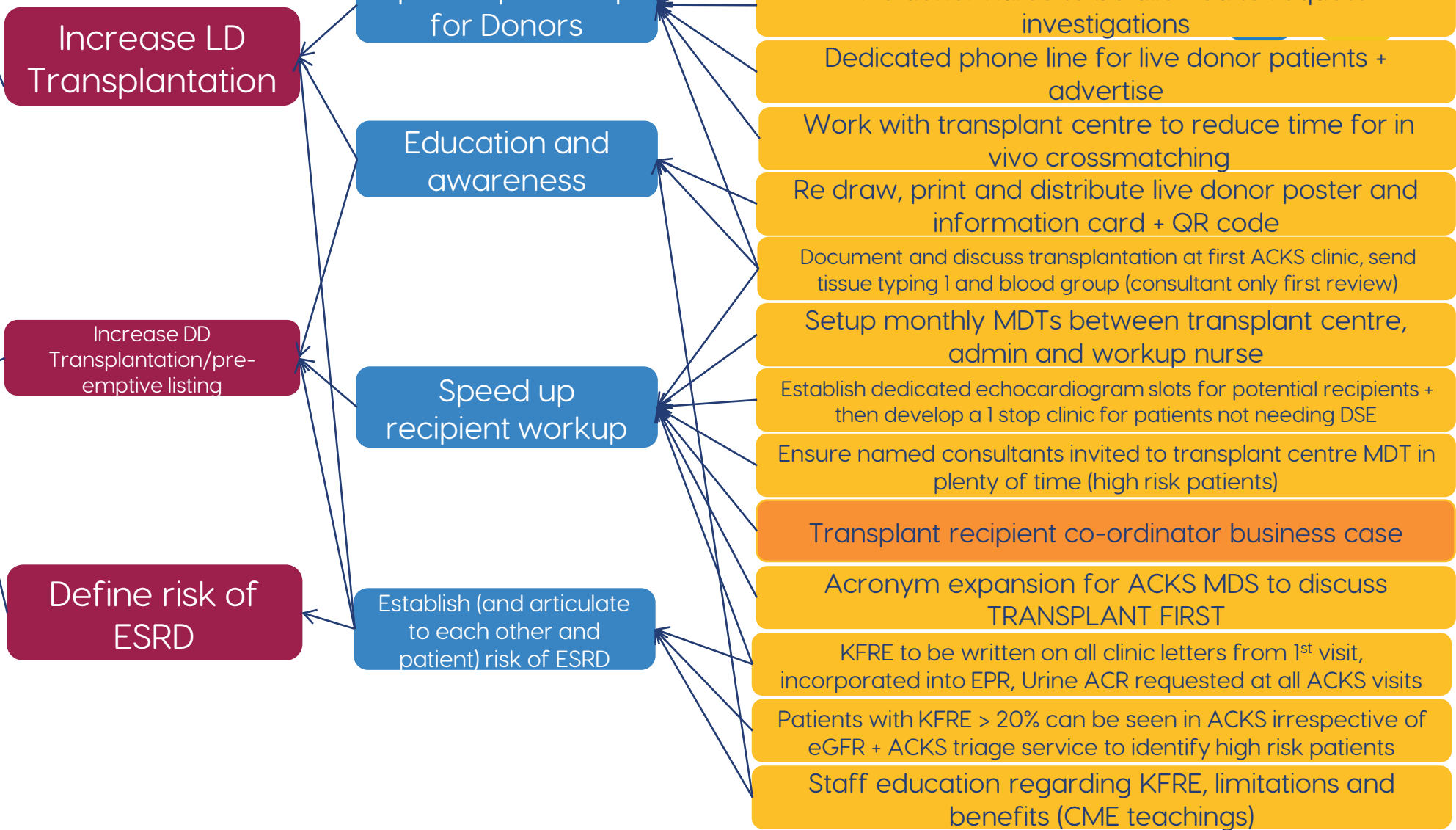
Communication tool

Driver diagram components



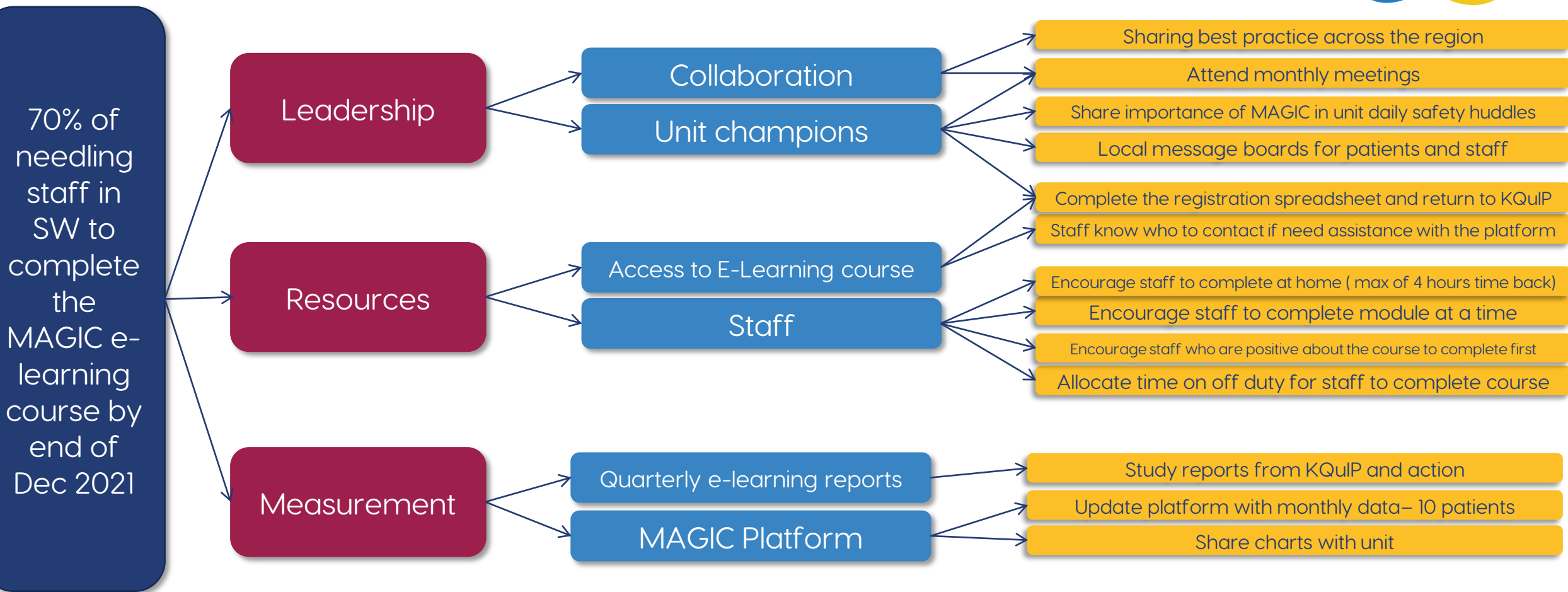
Example of a project driver diagram

20% of Salford patients starting RRT will be via a pre-emptive transplant by 31/12/2023





Example of a project driver diagram



For example ...



Lose weight

Energy in

Energy out

Get rid of large glasses

Pedometer

Gym work-out 3 days

Cycle to work

Meal planning

Take stairs more often

No pub week-days

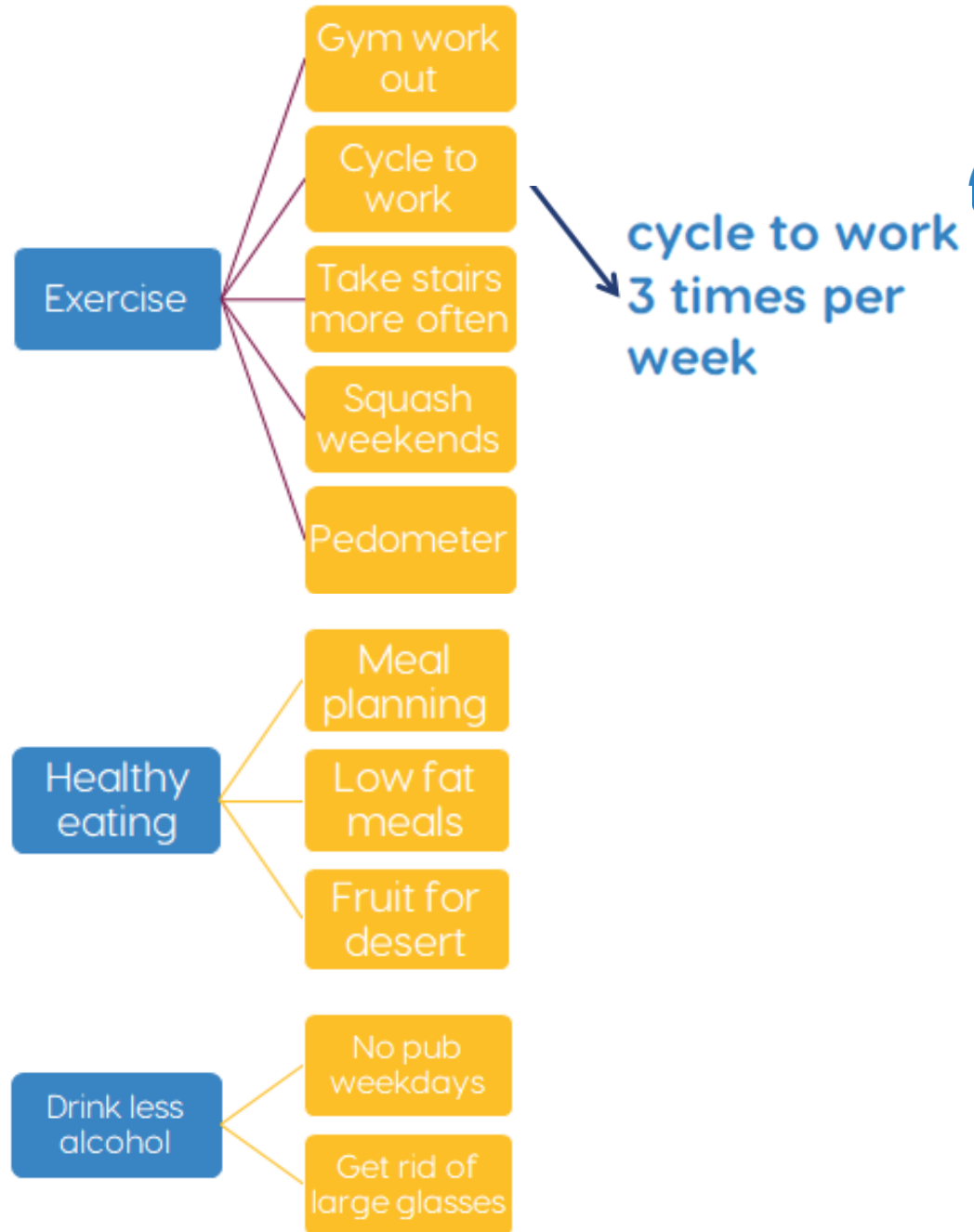
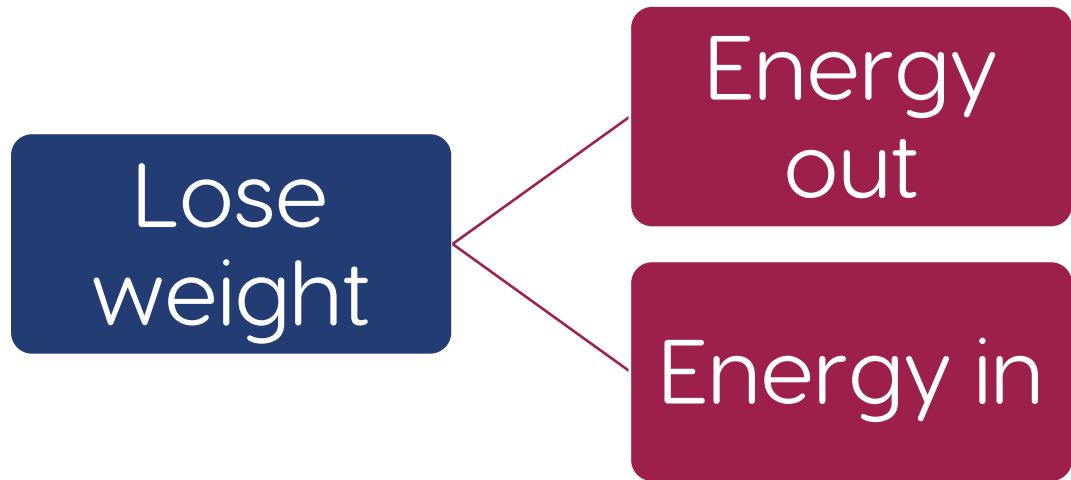
Squash weekends

Take packed lunch

Low fat meals

Fruit for desert

Ordering your ideas...





I am going to lose 1 stone by Nov 2022

Energy out

Exercise

- Gym work out 3 times a week
- Cycle from home to work 3 times a week
- Climb the stairs instead of taking the lift
- Play squash on Sunday
- Reach 10,00 steps every day

Energy in

Healthy eating

- Plan the weekly meals on a Saturday
- Ensure all foods have 5% fat content
- Plan fruit for very desert

Drink less alcohol

- No going to the pub on week days
- Remove all large glasses from the house

How to use the driver diagram



Visible

**Share it with the
team and
stakeholders**

Communication

Review

Over to you to begin to build a draft regional driver diagram - 30 mins



Activities

- You will be asked to confirm the project aim
- Discuss the drivers for change
- List all the possible change ideas and group them into secondary drivers